

# COMPANION PLANTS, POLLINATORS' SAVIORS?

CANADIAN BIODIVERSITY IS DECLINING!



Malnutrition  
(monocultures...)



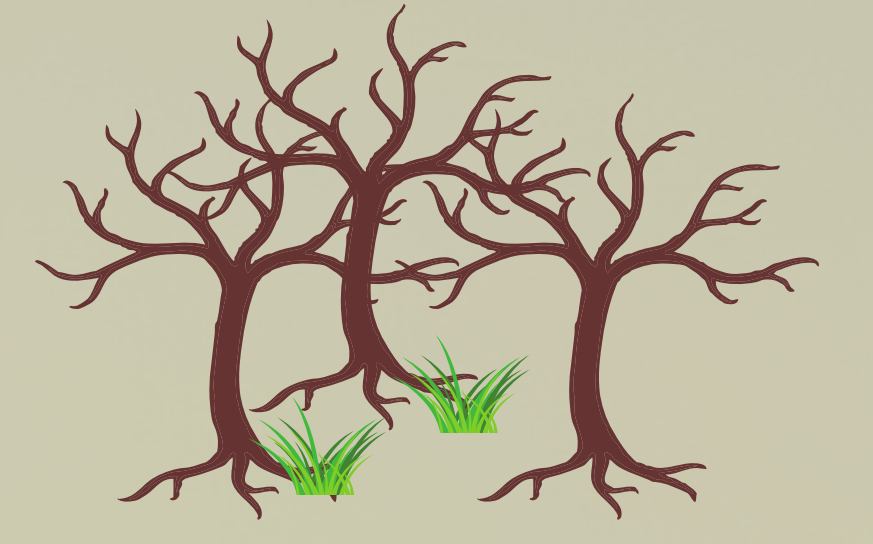
Pesticide  
use



Climate  
change

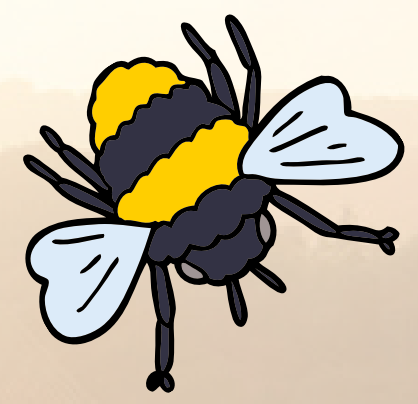


Diseases  
(parasites, virus...)

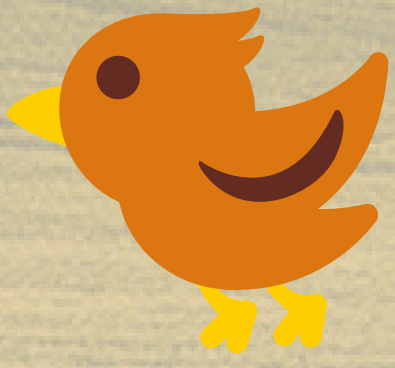


Habitat  
loss

## THE SUNFLOWER, A PLANT WITH MULTIPLE BENEFITS



Its presence does not  
reduce crop pollination  
efficiency



Benefits birds that prey  
on insect pests



Improves landscapes  
and crop management



Improves bee health and  
abundance



Interesting nutritional values  
(high in omega-3...)



Pollen and nectar with  
medicinal properties for bees  
and bumblebees

Reduces intestinal parasite loads



Parasitized vs healthy bumblebee



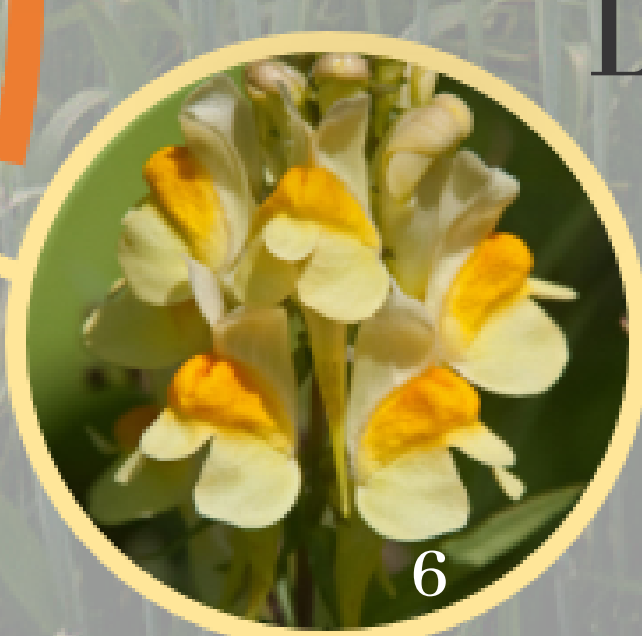
Thymes



Digitalis



Sunflowers



Linaria



### Did you know?

Honeybees can exclude native  
pollinators from sunflowers!



Keep hives at  
distance (>500m)



Space the  
sunflowers